

CMSC243: Systems Analysis and Design

Assignment 4: Requirements, Questions, FDD, Use Case

Jayne Rogers

Task 1: Requirements checklist for Family Health Care includes examples in each of the five main categories: outputs, inputs, processes, performance and controls.

Outputs: After completing the form the system must transmit the data to the patient database.

Inputs: The form is initially filled with the current information about the patient.

Processes: The system must retrieve the current information, present the form, check that the form is complete and without errors, and transmit the updated information to the patient database.

Performance: The system must result in 80% reduction in time for receptionists to complete intake for a patient.

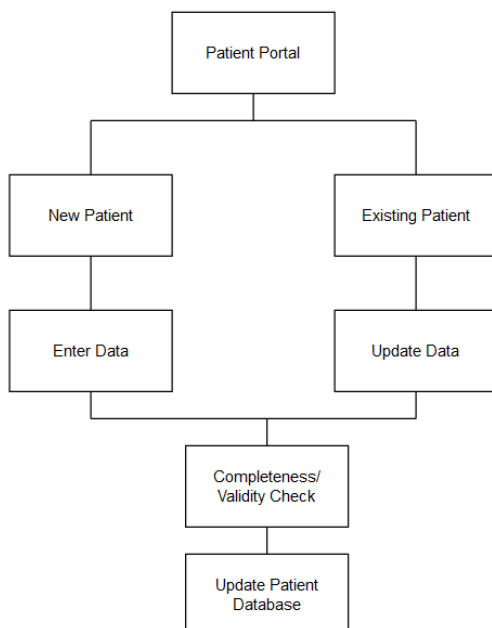
Controls: The patient must not be able to access information about other patients. The system must present the form such that if the paper form says to skip to question 25, it will omit the questions to be skipped. It will only present relative questions, for example if the patient is male, it does not ask questions related to women. It will check for valid fields for phone number, date of birth and other fields that have specific requirements.

Task 2: Develop a list of questions to include in an employee survey or interview.

This is a small operation, with only 13 or 14 employees. Interviews rather than a survey, would be appropriate.

- Could you show me the way the current system works?
- About how long does it take you to enter the data from one patient?
- What might make it take longer?
- What problems, if any, do you have with the current system?
- What do you think would make the current system better?
- Do you see any problems with the proposed system?

Task 3: Functional Decomposition Diagram (FDD) shows the systems main functions.



Task 4: Use case diagram that represents the interaction between a user and the proposed system.

