

CMSC243: Systems Analysis and Design

Assignment 3: PERT/CPM

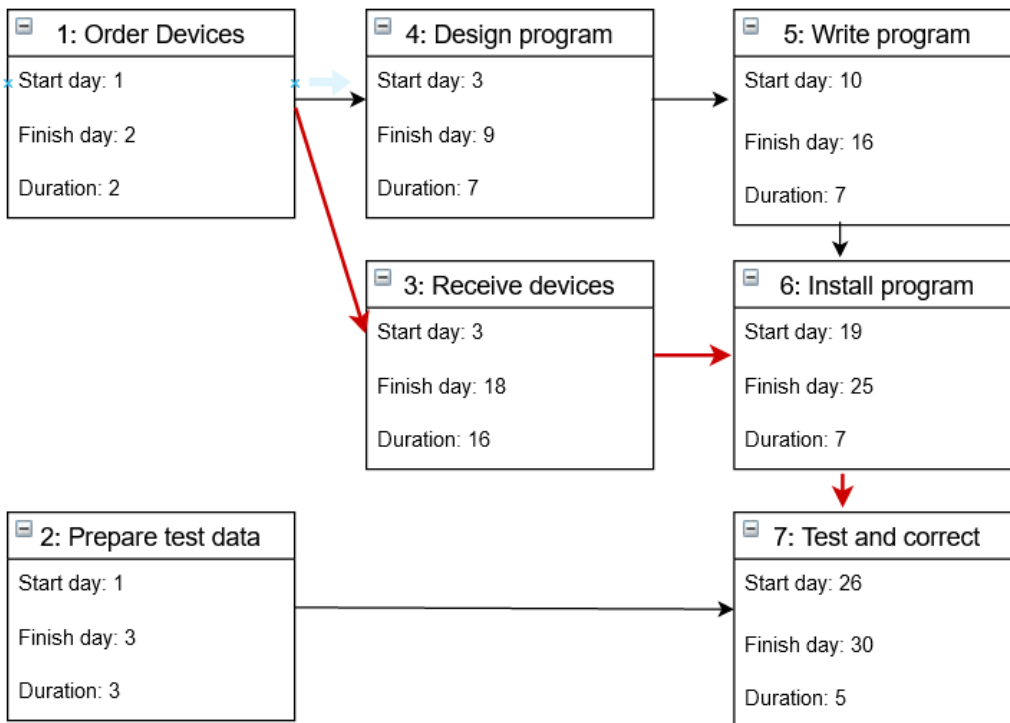
Jayne Rogers

Tasks 1 & 2: Table lists all tasks separately, with their duration, shows dependent tasks, and indicates predecessor tasks for Family Health Care.

Task	Duration	Predecessor Task	Dependent Task
1. Compare several tablets, kiosk devices, or handheld devices for suitability, place order.	2 days	none	3,4
2. Prepare test data	3 days	none	7
3. Receive selected devices	16 days (shipping)	1	6
4. Design program to present the form to patient and check for completeness, interface with patient information system*	7 days	1	5
5. Write program*	7 days	4	6
6. Install program on devices	3 days	3,5	7
7. Test using test data and correct errors	5 days	2,6	implementation

* Design of form and programming language depends on device selected.

Task 3: PERT/CPM chart for Family Health Care



The critical path is shown in red: 1: Order devices; 3: Receive devices; 6: Install program; 7: Test and correct

Task 3: Overall duration of the project for Family Health Care

The overall duration is 30 days. The time to receive the devices is critical. Any delay in shipping will affect the overall duration.